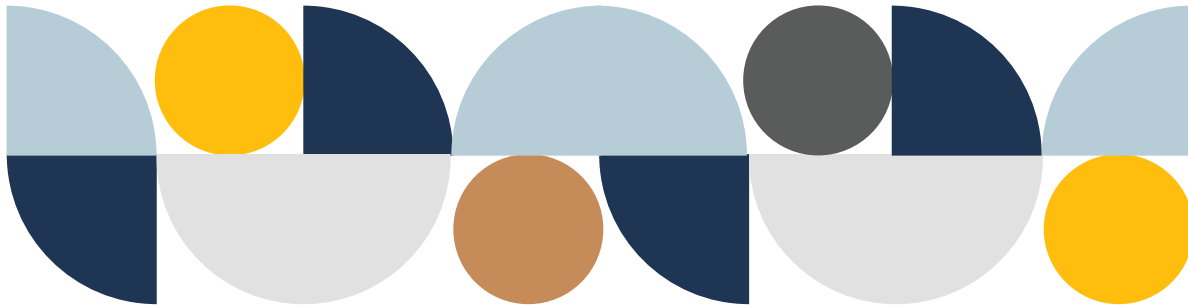




Are you in midwifery care in Ontario?



Or have you recently given birth with a midwife?



Midwifery Infant Feeding Information Survey

Study for Ontario midwifery clients

We are interested in understanding how midwifery clients in Ontario access information to support their infant feeding decisions. Whether you are planning to, or are currently, chest/breastfeeding, formula feeding, or both - **we want to hear from you!**

Participants will be asked to complete an online survey. The survey is voluntary and anonymous. It should take **15-20 minutes** of your time.

There is no compensation for participation in this study.

For more information please contact:

Jessica Jones, RM
Master of Public Health Candidate
Email: jonesjm@mcmaster.ca
Phone: (905) 525-9140 x 22248

Are you eligible?

- 16 years of age or older
- currently in midwifery care or discharged from midwifery care in Ontario within the last two months

To participate in this study

Please visit:

<https://rsjh.ca/redcap/surveys/?s=RYL3ARPX79> before **February 28, 2021**.

You can also access this study via Facebook at *Midwifery Infant Feeding Information Survey* or by scanning the following QR code:

